



Loewe **klang mr5 | mr3 | mr1**

Wireless active speakers for home cinema and multiroom audio

Ideal for home cinema and music throughout the house
180 watts | 150 watts | 30 watts total music power output
Multiroom audio with Apple AirPlay, Google Cast and DTS Play-Fi
Multichannel home cinema with Loewe wireless digital audiolink
Touch panel made of real glass on the top side
Five favourite buttons for freely selectable sources
Perfect match for Loewe klang bar3 mr and klang bar5 mr



LOEWE. was found by the Loewe brothers as Radio Frequenz GmbH in Berlin in 1923.
Today we still design, develop and produce consumer electronics – Made in Germany.
bild – is the German word for picture or image.
klang – is the German word for sound or tone.

Data sheet
Loewe **klang mr5 | mr3 | mr1**
December 2023

LOEWE.

loewe.tv     

Loewe **klang mr5 | mr3 | mr1**

Wireless active speakers for home cinema and multiroom audio



Multichannel home cinema.

Loewe wireless digital audiolink (second generation) for lossless and latency-free wireless signal transmission in multichannel home cinema with Loewe klang mr as the active surround speakers.

Multiroom Audio.

DTS Play-Fi, Apple Airplay and Google Cast offer a variety of services such as Spotify, Amazon Music, Tidal, Deezer and Internet radio.

Bluetooth direct streaming.

Connect your mobile phone via Bluetooth directly to the speaker and enjoy your playlist.



Touch surface.

The glass touch panel on the top is easy to operate and offers space for up to five favourites, which can be compiled from any source.



Powerful sound.

The layout of the speakers in combination with passive radiators creates a perfectly balanced sound experience with 30 / 150 / 180 watts - with powerful bass and crystal clear high tones.



Elegant.

The design is refined and elegant. The glass top with integrated touch panel and illuminated status LED is a tribute to the Loewe eye. The cabinet is covered with our high-quality acoustic fabric and blends perfectly into your living environment.

Colour

 basalt grey

Model

klang mr5

klang mr3

klang mr1

Article

60606

60605

60604

Loewe klang mr5 | mr3 | mr1

Wireless active speakers for home cinema and multiroom audio

Achievements



reddot winner 2022



“The Loewe klang mr5 is both optically and acoustically a true statement.”

HIFI.DE, 18. March 2023 about klang mr5
test score 8.6 VERY GOOD

“Der Loewe klang mr3 is a speaker that meets the highest demands.”

HIFI.DE, 21. March 2023 about klang mr3
test score 8.5 VERY GOOD

“Der Loewe klang mr1 is enormous flexible and fits practically in every scenario.”

HIFI.DE, 5. March 2023 about klang mr5
test score 8.4 GOOD

“Balanced and pleasant tuning, clean bass and practically unaltered timbres.”

Audio Video Foto Bild, edition 12/2022 about klang mr3
TEST WINNER, 1st place, test score 2,1 GOOD

Loewe **klang mr5 | mr3 | mr1**

Wireless active speakers for home cinema and multiroom audio

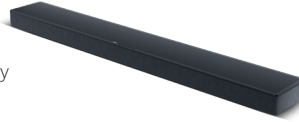
System components

Loewe klang bar5 mr

5.1.2 Dolby Atmos soundbar with wireless subwoofer and 800 watts total music power

Colour

 basalt grey



Model

klang bar5 mr

Article

60601

Loewe klang bar3 mr

3.1 Dolby Atmos soundbar with integrated subwoofer and 360 watts total music power

 basalt grey



klang bar3 mr

60614

Loewe klang sub5

Any number of klang sub5 can be connected to a klang bar3 mr or klang bar5 mr at the same time

 basalt grey



klang sub5

60603

Loewe remote klang mr

Multifunctional IR remote control for Loewe klang mr and Loewe klang bar to operate all basic functions and sound settings

 black



remote klang mr

74000

Loewe klang mr5 | mr3 | mr1

Wireless active speakers for home cinema and multiroom audio



All product and company names are trademarks™ or registered® trademarks of their respective holders. Use of them does not imply any affiliation with or endorsement by them. Google and Chromecast built-in are trademarks of Google LLC.

Technical data

Loewe klang

	mr5	mr3	mr1
Audio (acoustic)			
Frequency range (Hz) @ ±3 dB	35-20.000	40-20.000	55-20.000
Orientation front / side / up / rear firing	●/●/—/●	●/●/—/●	●/—/—/—
Acoustic speaker concept	closed + passive membranes	closed + passive membranes	closed
Channel configuration (speaker layout)	1.0 (mono)	1.0 (mono)	1.0 (mono, rear surround)
Driver total amount	9	6	1
Driver active	3x 3/4", 3x 2.5", 1x 5"	3x 2", 1x 3.5" + 2x 3.5"	1x 3"
Driver passive	2x 5"	2x 3.5"	—
2-channel crossover	● active	● active	—
Audio (electric)			
Frequency range (Hz) @ ±1 dB	20-20.000	20-20.000	20-20.000
Class-D amp	●	●	●
Power (watts sine / music)	90 / 180	75 / 150	15 / 30
Total harmonic distortion @ 1 watt / 10 watts	< 0.3 / < 0.3	< 0.3 / < 0.3	< 0.3 / < 0.3
Dynamic range / Signal to noise ratio (dB)	24 bit / > 80	24 bit / > 80	24 bit / > 80
Bass and treble control / loudness	● (remote) / dynamic	● (remote) / dynamic	● (remote) / dynamic
Protection circuit: heat / current / voltage / short cut	●/●/●/●	●/●/●/●	●/●/●/●
Dolby Audio / Digital / Digital Plus / Volume / Atmos / Atmos Music	via klang bar mr	via klang bar mr	via klang bar mr
DTS HD / DTS:X	via klang bar mr	via klang bar mr	via klang bar mr
Operation and apps			
Display technology	White LED + Color LED	White LED + Color LED	White LED + Color LED
Screen resolution (pixels)	5x dot + 1x line	5x dot + 1x line	5x dot + 1x line
Screen diagonal (cm / inch)	6 / 2,4	6 / 2,4	6 / 2,4
my Loewe app / smart apps (all: Android + iOS)	● / DTS Play-Fi app	● / DTS Play-Fi app	● / DTS Play-Fi app
Voice control by Alexa skills	●	●	●
Software update (via USB / Internet)	●/●(DTS Play-Fi)	●/●(DTS Play-Fi)	●/●(DTS Play-Fi)
Media and reception			
USB music player	●	●	●
Bluetooth music player	●	●	●
Internet radio	● (via DTS Play-Fi app)	● (via DTS Play-Fi app)	● (via DTS Play-Fi app)
DTS Play-Fi / Hi-Res Audio	●/●	●/●	●/●
Spotify Connect / Google Cast / Apple AirPlay	●/●/●	●/●/●	●/●/●
Multiroom audio support	●	●	●
Multichannel home cinema support	●	●	●
Connectivity and interfaces			
USB	1 x USB 2.0 (SW update)	1 x USB 2.0 (SW update)	1 x USB 2.0 (SW update)
Bluetooth	●	●	●
WLAN (Wi-Fi) integrated	●	●	●
LAN network connection	●	●	●
Wireless Digital Audiolink (second generation)	●	●	●
Analogue audio jack in (3.5 mm stereo)	●	●	●
Wall mount	—	—	●
Network and formats			
WLAN (Wi-Fi) standard	IEEE 802.11a/b/g/n/ac	IEEE 802.11a/b/g/n/ac	IEEE 802.11a/b/g/n/ac
WLAN (Wi-Fi) power (max. mW)	<100	<100	<100
WLAN (Wi-Fi) frequency range	2400-2483,5 / 5150-5850 MHz	2400-2483,5 / 5150-5850 MHz	2400-2483,5 / 5150-5850 MHz
WLAN (Wi-Fi) encryption	WEP 64, 128 Bit (ASCII, HEX)	WEP 64, 128 Bit (ASCII, HEX)	WEP 64, 128 Bit (ASCII, HEX)
WLAN (Wi-Fi) encryption WPA	WPA PSK, WPA2 AES, WPS	WPA PSK, WPA2 AES, WPS	WPA PSK, WPA2 AES, WPS
Bluetooth standard	4.2	4.2	4.2
Bluetooth power (max. mW)	<10	<10	<10
Bluetooth frequency range	2,4 GHz	2,4 GHz	2,4 GHz
Bluetooth protocols	A2DP SNK, AVRCP	A2DP SNK, AVRCP	A2DP SNK, AVRCP
Supported audio formats	MP3, M4A, AAC, FLAC, WAC, AIFF, Hi-Res AUDIO	MP3, M4A, AAC, FLAC, WAC, AIFF, Hi-Res AUDIO	MP3, M4A, AAC, FLAC, WAC, AIFF, Hi-Res AUDIO
Energy and environment			
Mains voltages AC	100-240V, 50/60 Hz	100-240V, 50/60 Hz	100-240V, 50/60 Hz
Power consumption eco standby mode (watts)	0,3	0,3	0,3
Power consumption multiroom sleep mode (watts)	6	6	6
Ambient temperature while in operation	5-35° C	5-35° C	5-35° C
Relative humidity (non-condensing)	20-80%	20-80%	20-80%
Dimensions			
Weight (approx. kg)	4,5	3,2	1,4
W* x H x D (approx. cm)	22,5 x 40,1 x 21,5	19,6 x 32,1 x 18,7	16,0 x 18,8 x 15,4
Scope of Delivery			
Manual / power cord	●/●	●/●	●/●
Others	—	—	wall mount klang mr1
Optional accessories			
Selection of recommended setup solutions and audio systems	remote klang mr, klang bar5 mr, klang bar3 mr, klang mr5, klang mr3, klang mr1, iconic v, iconic i		

● = available, ○ = optional, — = not available

Technical changes and delivery options are subject to change without notice. The product portfolio may be different and might vary depending on the country. Service matters are all handled individually.

Data sheet

Loewe klang mr5 | mr3 | mr1

December 2023